

## Explanation of plates.

### Plate I

Plant regeneration from epicotyls.

- 1A. Shoot regeneration from epicotyl.
- 1B. Plantlet grown in a glass vessel.
- 1C. Regenerated plant grown in a pot located in a green house.

### Plate II

Plant regeneration from calli.

- 2A. Epicotyls plated on the MS medium containing 2 mg/l 2,4-D.
- 2B. Calli derived from epicotyls.
- 2C. Shoots regenerated from calli.
- 2D. Organogenic calli and regenerated shoots.
- 2E. Albino plantlets from calli.

### Plate III

Plant regeneration from protoplasts.

- 3A. Protoplasts isolated from suspension cells.
- 3B. Cell division of protoplasts after 5 days culture
- 3C. Cell colony formed after 4 weeks of culture.
- 3D. Compact calli on MS growth medium.
- 3E. Shoot regeneration from protoplast.
- 3F. Plantlet having small leaves and many nodes.
- 3G. Regenerated plant from protoplast-callus grown in a pot.

### Plate IV

Field cultivation of regenerated plants and variants.

- 4A. Field cultivation of regenerated plants.
- 4B. Seeds harvested from regenerated plants.  
Left: Control plant, Right: Regenerated plant.
- 4C. Albino, green, chimera plants found among regenerants.
- 4D. Abnormal growth found in regenerated plants.

### Plate V

Transformation of adzuki bean using *Agrobacterium*.

- 5A. Epicotyls inoculated (left) and non-inoculated (right) with *A. tumefaciens*.
- 5B. Kanamycin susceptibility of epicotyl.  
Upper left: Kanamycin (Km) 0 mg/l, Upper right: Km 75 mg/l.  
Lower left: Km 50 mg/l, Lower right: Km 100 mg/l.
- 5C. Plantlet growth on the MS medium containing kanamycin.  
Left: Inoculated with *Agrobacterium*, Right: Control.
- 5D. Root formation from primary leaves inoculated with *A. rhizogenes* on the MS medium, without plant growth regulators.
- 5E. Vigorous hairy roots on the MS medium, without plant growth regulators.
- 5F. Plants regenerated from hairy roots.

Plate I

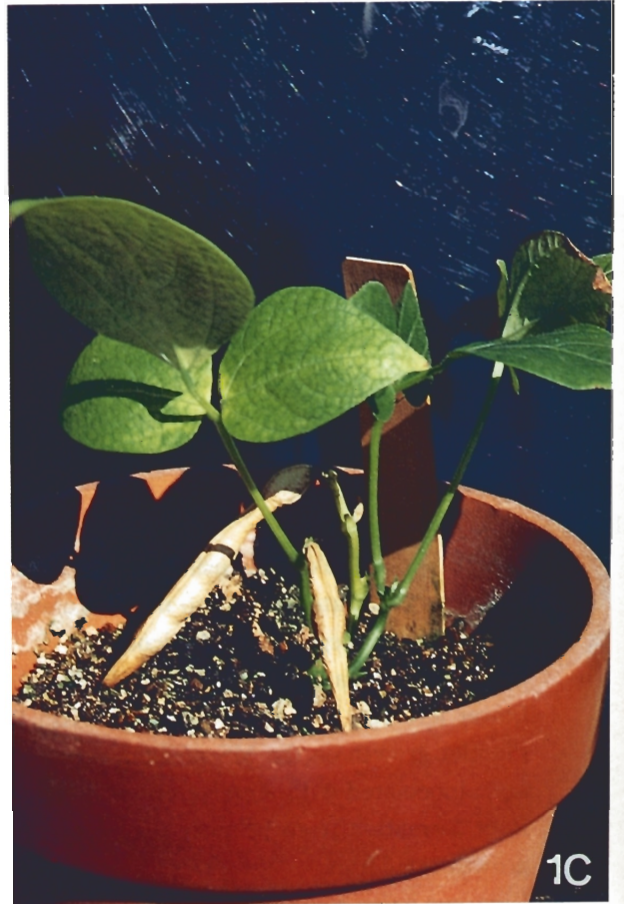




Plate II

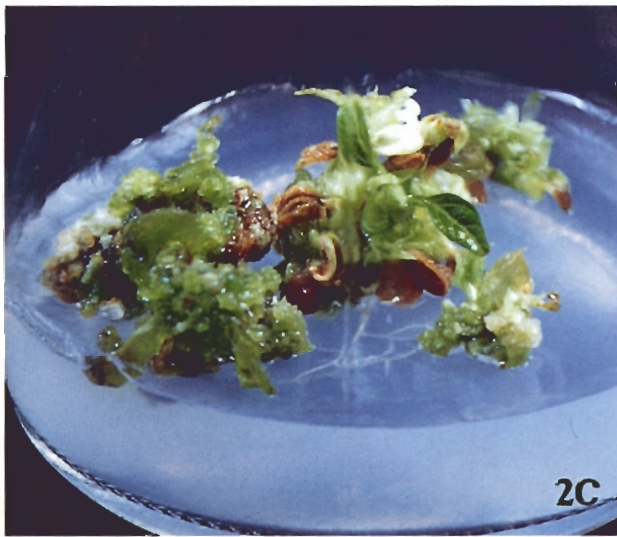
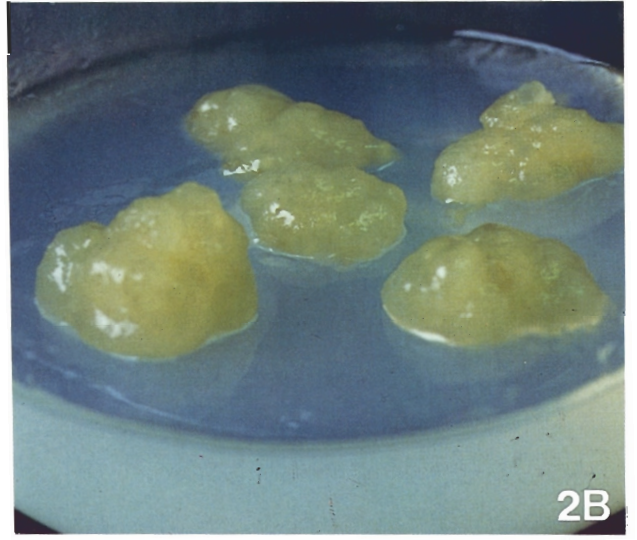
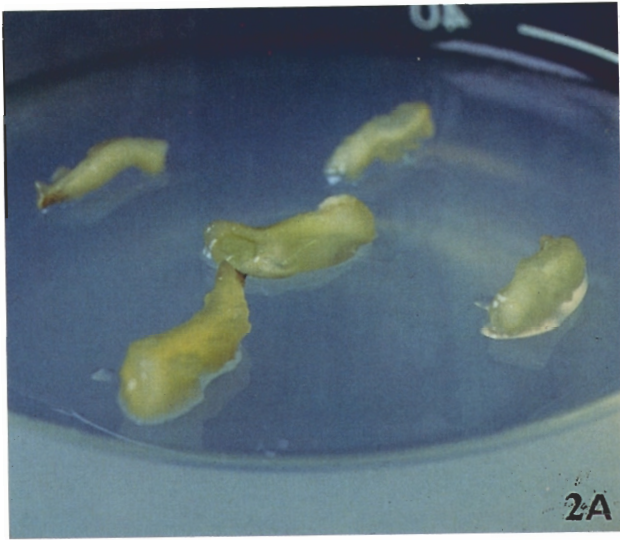




Plate III

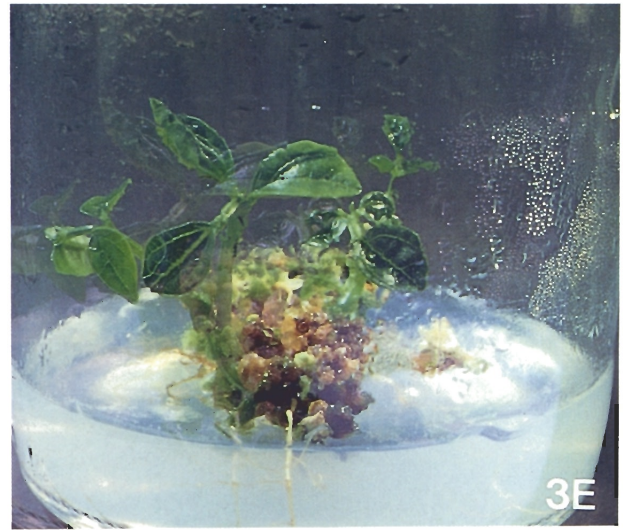
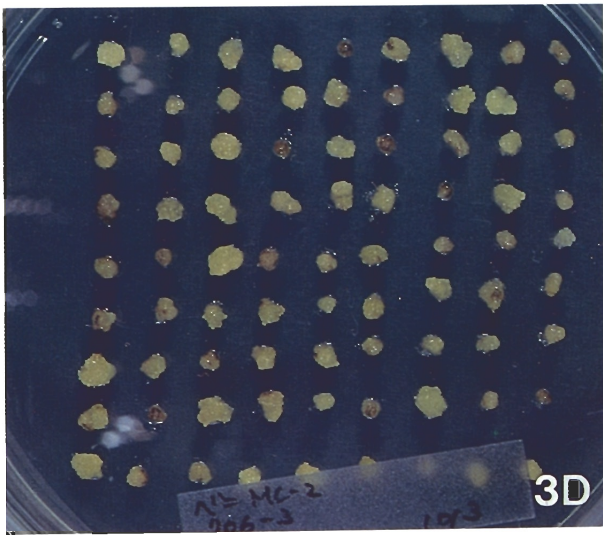
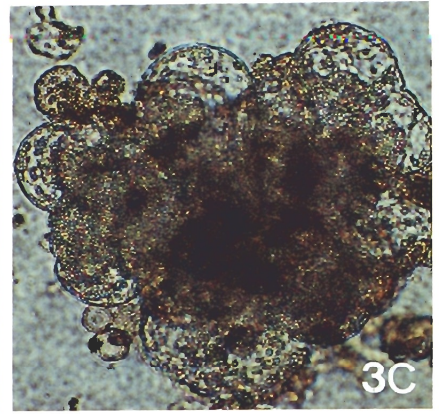
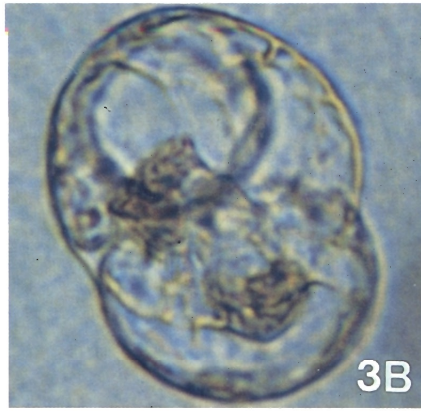
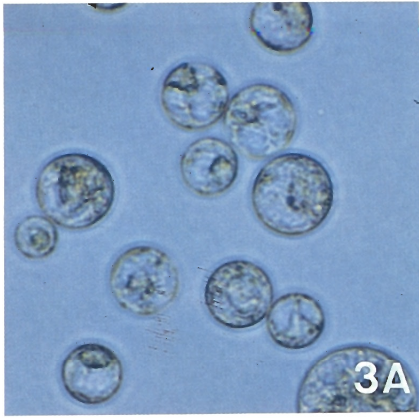




Plate IV

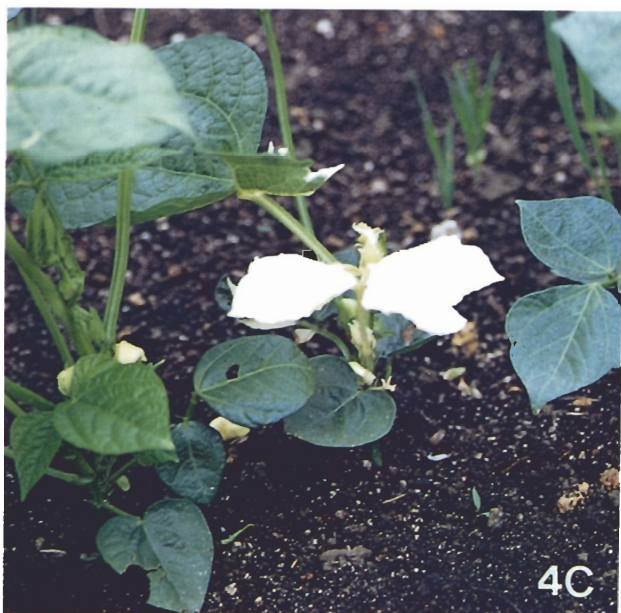
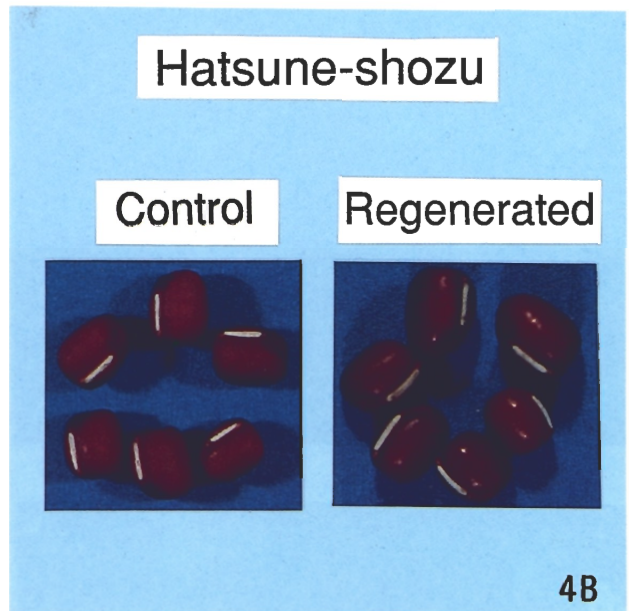
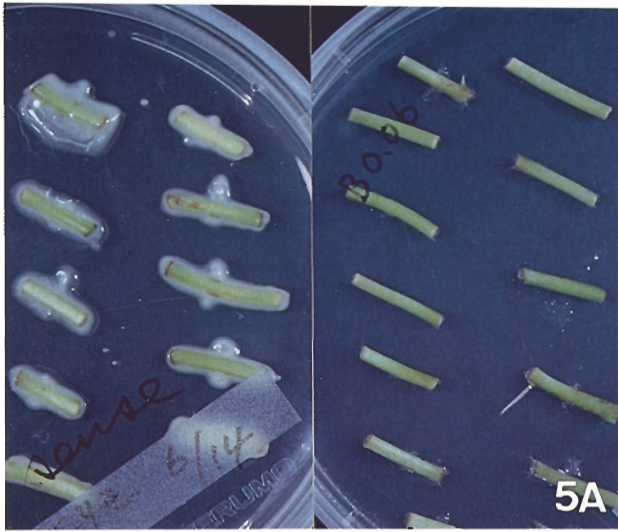
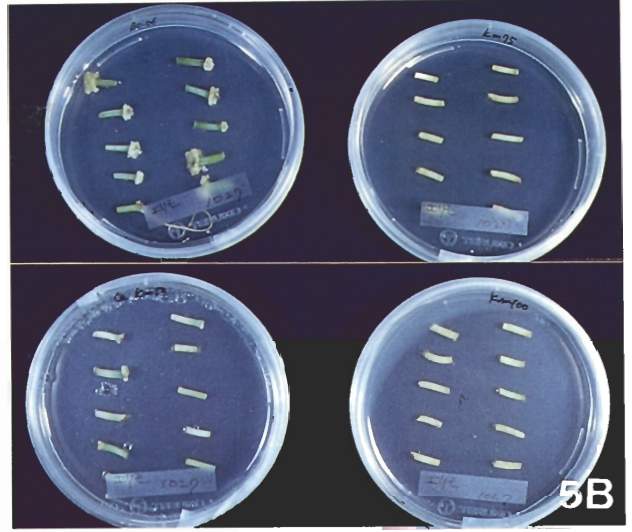




Plate V



5A



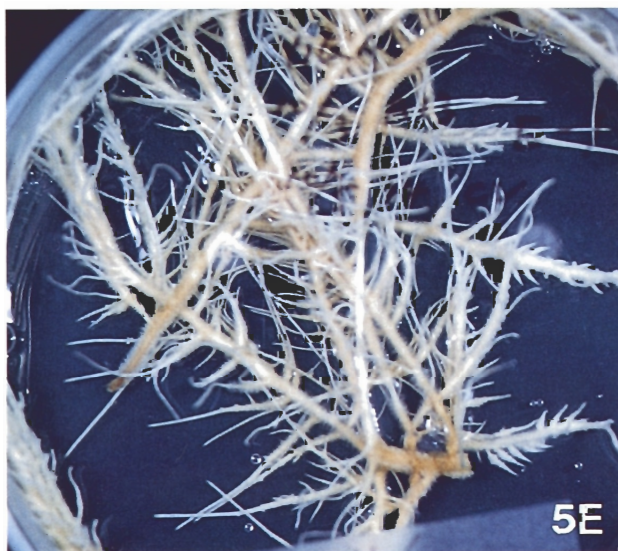
5B



5C



5D



5E



5F