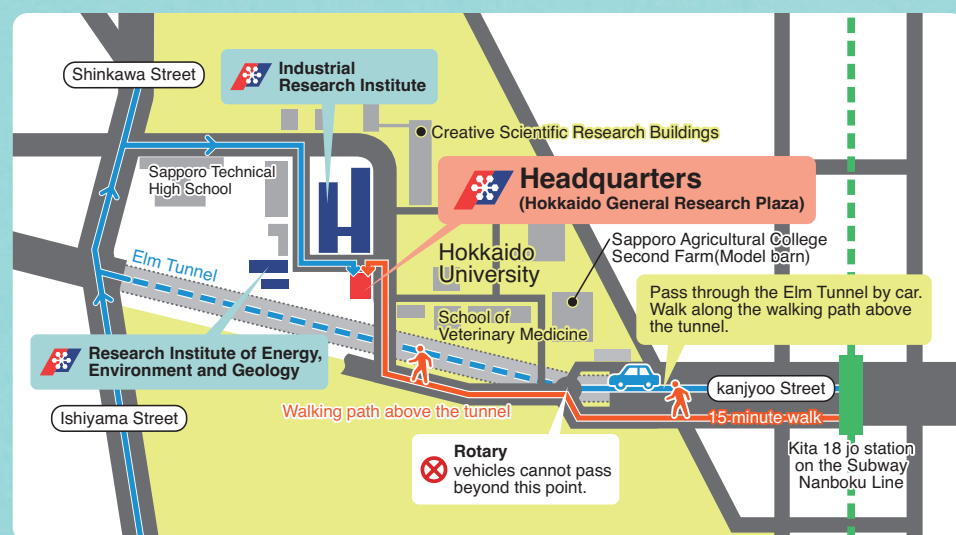


Research to realize
dreams for the
future of Hokkaido



Symbol of the Hokkaido Research Organization

The silhouette represents Hokkaido as a research institute for Hokkaido citizens with a snow crystal symbolizing Hokkaido at the center. Based on the colors of the Hokkaido flag, dark blue symbolizes the sea and sky of Hokkaido, white expresses splendor and snow, and red indicates an indomitable spirit. To depict future potential, the symbol as a whole is comprised of two lines pointing in the upper right direction.



Hokkaido General Research Plaza Kita 19 Nishi 11, Kita-ku, Sapporo 060-0819 JAPAN

TEL +81-11-747-0200(main) FAX +81-11-747-0211

URL <https://www.hro.or.jp/> E-mail hq-entry@hro.or.jp

Facebook <https://www.facebook.com/dosoken/>

<https://www.hro.or.jp/>



HRO

Researching Hokkaido's Future

Research to realize dreams for the future of Hokkaido

The Hokkaido Research Organization (HRO) is a comprehensive research institute established in 2010 by integrating 22 existing research institutes. We at the HRO take a comprehensive approach as we cover a wide range of fields, including agriculture, fisheries, forestry, industrial technology, energy, the environment, geology, building, and community development. Our collaboration with many external partner institutions has produced myriad research findings.

We are engaged in a wide array of R&D projects to respond to the changing times, including changes in socioeconomic conditions and advances in science and technology. From the viewpoint of selection and concentration of issues to be addressed, we focus on the three fields of food, energy, and communities as we promote R&D for practical application and commercialization comprehensively and strategically.

We will continue to propose the future we believe Hokkaido should try to shape for itself by taking advantage of its strengths in primary industries and various regional characteristics, and engage in R&D to realize that vision.

As an institution committed to improving the lives of Hokkaido residents and promoting industries in the prefecture, we will continue our efforts to further the creation of a Hokkaido filled with dreams for its future. Your kind support is highly appreciated.

Fundamental principle

Mission

We contribute to the prosperity of Hokkaido residents and the conservation of the natural environment through research and technical support leveraging the rich natural surroundings and regional characteristics of Hokkaido.

Goals

To expand Hokkaido's global influence, we aim to become an organization that is trusted by and fulfills the expectations of Hokkaido residents by drawing upon our collective strengths as a research institute that bridges multiple industrial areas and that strives to steadily provide feedback to the local community.

Action guidelines

We strictly comply with the ethical code of conduct as researchers and abide by all laws as we set our sights on creating new opportunities and technologies with Hokkaido resident-oriented perspectives, persisting with our aspirations, and providing fair and reliable services.

Outline of Organization

Name: Local Independent Administrative Agency Hokkaido Research Organization (abbreviation: HRO)

Date of establishment: April 1, 2010

Headquarters: Hokkaido General Research Plaza, Kita 19 Nishi 11, Kita-ku, Sapporo

Scope of services: experiments, research, surveys, technical development, extension and technical support related to various fields: agriculture, fisheries, forestry, industrial technology, energy, the environment, geology, building and community development; provision of experimental equipment and facilities

Structure of the HRO

Corporate Department (Sapporo City) Hokkaido General Research Plaza ☒ hq-entry@hro.or.jp

Agricultural Research Department

● Location of research department head

- Central Agricultural Experiment Station (Naganuma Town) ☒ central-agri@hro.or.jp
- Kamikawa Agricultural Experiment Station (Pippu Town) ☒ kamikawa-agri@hro.or.jp
- Donan Agricultural Experiment Station (Hokuto City) ☒ donan-agri@hro.or.jp
- Tokachi Agricultural Experiment Station (Memuro Town) ☒ tokachi-agri@hro.or.jp
- Kitami Agricultural Experiment Station (Kunneppu Town) ☒ kitami-agri@hro.or.jp
- Dairy Research Center (Nakashibetsu Town) ☒ konsen-agri@hro.or.jp
- Animal Research Center (Shintoku Town) ☒ animal-agri@hro.or.jp
- Ornamental Plants and Vegetables Research Center (Takikawa City) ☒ hanayasai-agri@hro.or.jp

Fisheries Research Department

- Central Fisheries Research Institute (Yoichi Town) ☒ central-fish@hro.or.jp
- Hakodate Fisheries Research Institute (Hakodate City) ☒ hakodate-fish@hro.or.jp
- Kushiro Fisheries Research Institute (Kushiro City) ☒ kushiro-fish@hro.or.jp
- Abashiri Fisheries Research Institute (Abashiri City) ☒ abashiri-fish@hro.or.jp
- Wakkanai Fisheries Research Institute (Wakkanai City) ☒ wakkanai-fish@hro.or.jp
- Mariculture Fisheries Research Institute (Muroran City) ☒ mariculture-fish@hro.or.jp
- Salmon and Freshwater Fisheries Research Institute (Eniwa City) ☒ sf-fish@hro.or.jp

Forest Research Department

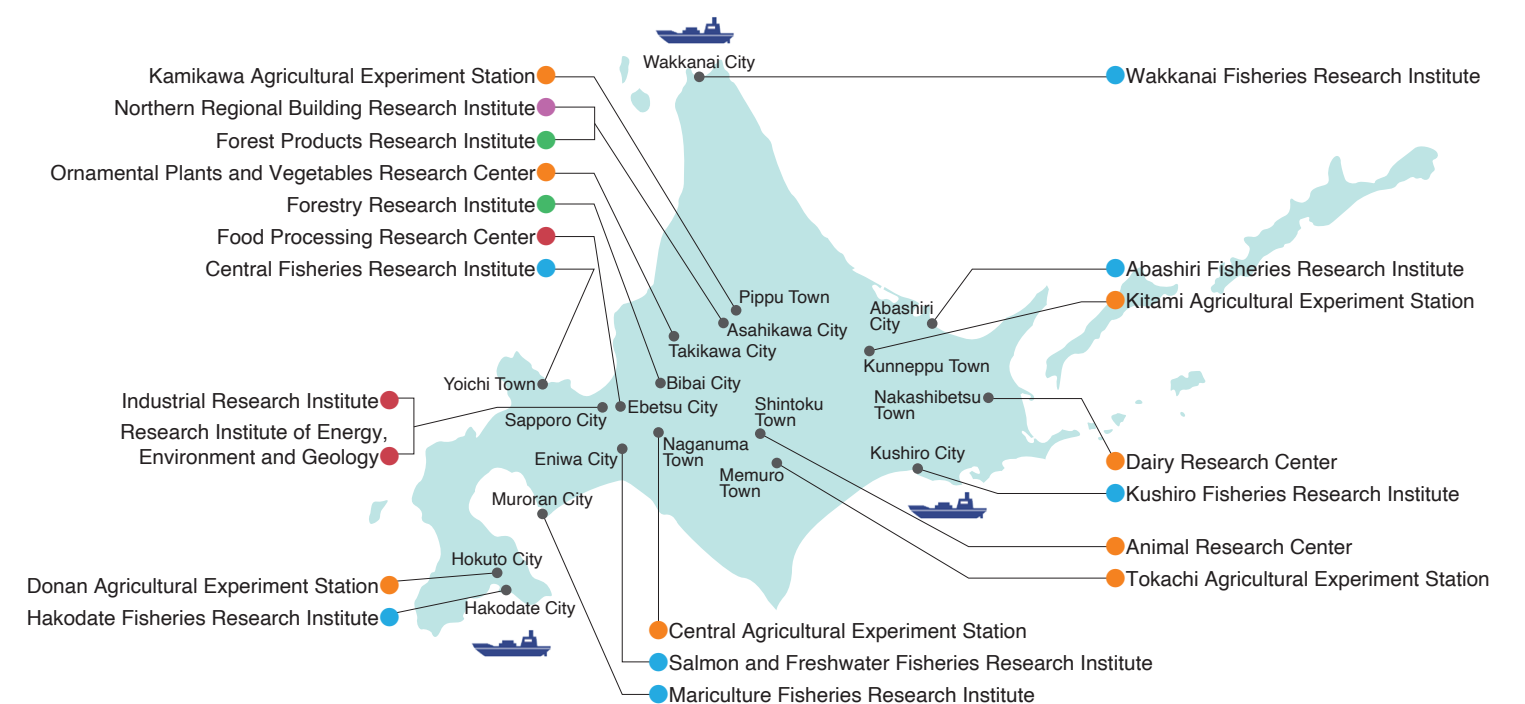
- Forestry Research Institute (Bibai City) ☒ forestry@hro.or.jp
- Forest Products Research Institute (Asahikawa City) ☒ rinsan-ext@ml.hro.or.jp

Industrial Technology and Environment Research Department

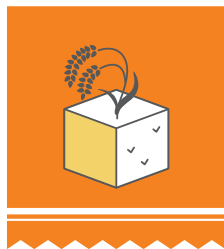
- Industrial Research Institute (Sapporo City) ☒ iri-sodan@ml.hro.or.jp
- Food Processing Research Center (Ebetsu City) ☒ food-shien@hro.or.jp
- Research Institute of Energy, Environment and Geology (Sapporo City) ☒ eeg@hro.or.jp

Building Research Department

- Northern Regional Building Research Institute (Asahikawa City) ☒ nrb@hro.or.jp



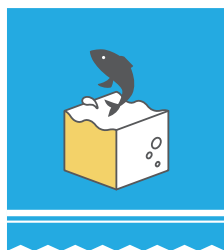
Research Field



Agriculture

Supporting Hokkaido's agriculture and food

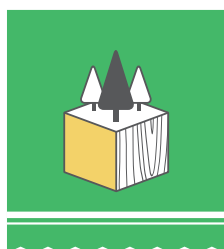
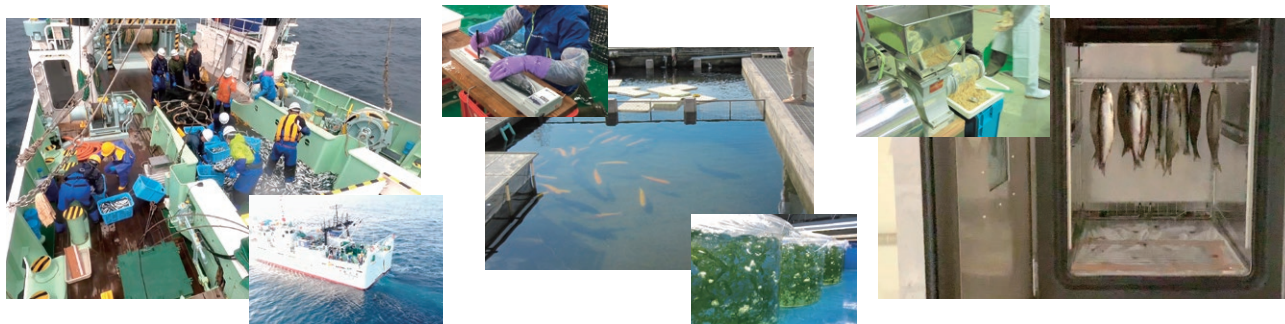
We develop crop cultivars and cultivation technologies suitable for individual regions in Hokkaido, produce breeding stocks, develop technologies for livestock husbandry, and conduct research on food safety and biotechnology.



Fisheries

A variety of surveys and research to boost the fishing industry

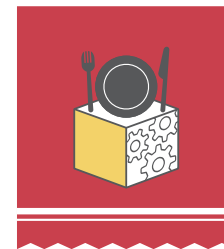
We conduct surveys and research to promote community-based fisheries management and fish farming for stable fishery production, to ensure the safety of marine products and increase their added value, and to pursue fisheries in harmony with nature as well as advanced utilization of sea areas.



Forestry

Promoting local afforestation and the logging industry

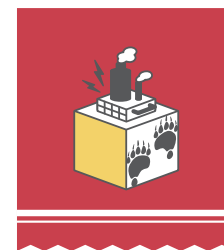
We conduct research to promote afforestation and greening activities best suited to the needs of individual areas, the healthy development of forestry, the recycling of forest resources, and the advancement of the logging industry through technical improvement.



Industrial Technology

Technical support for entrepreneurs and product commercialization at companies in Hokkaido

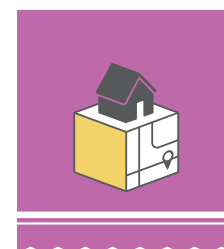
We work to promote the manufacturing industry and improve the lives of Hokkaido residents through research and development and technical support for the development of industry, including the food processing sector.



Energy, Environment, and Geology

Contributing to environmental conservation and effective use of resources

We conduct R&D related to advanced energy use, resource recycling, geological hazards, geological resources, environmental conservation, and biodiversity conservation. We also provide extension and technical support to the Hokkaido Government, municipalities, relevant companies, and other organizations.



Building and Community Development

Research on comfortable housing, building and community development

We conduct R&D on housing, building and community development that support environmentally friendly and high-quality safe living. We also provide extension and technical support to the Hokkaido Government, municipalities, relevant companies, and other organizations.



Technical support

Utilizing our research findings, technologies and expertise, we support technological development and problem-solving by companies and business operators.

Technical consultation	We respond to various technical questions and inquiries at the general consultation counter located inside our headquarters and at individual research institutes.
Technical guidance	Using HRO research results and expertise, we provide guidance on solutions to technical problems.
Problem-solving support	We conduct simple, short-term tests and surveys to provide workable technical guidance.
Guidance on technical development (Industrial Research Institute)	We dispatch employees to companies and other organizations on either a mid- or long-term basis to offer technical guidance.
Requested testing	We conduct tests, analysis, measurements and surveys.
Facility use	HRO facilities, including testing equipment, are available for loan.
Evaluation of architectural performance (Building Research Department)	Based on the Building Standards Act, we evaluate the necessary building structure to certify structural methods, etc., as well as the performance of building materials.
Structural calculation compatibility determination (Building Research Department)	At the request of clients, we determine the compatibility of structural calculations based on the Building Standards Act.
Dispatch of instructors and requested writing	As instructors, committee members and advisors, we provide advice and write articles for publications.
Technical review	We perform technical reviews of new products and technologies upon request of the national and Hokkaido governments, organizations and financial institutions.
Incubation facility (Industrial Research Institute, Food Processing Research Center)	We lend the incubation facility to those desiring to develop products and launch new businesses.

▶ Trial product testing facility

Using a trial product testing facility that conforms with facility standards under the Food Sanitation Act, which is aimed at promoting food-related research and efficient technical transfers, we are contributing to the development of the food industry in Hokkaido.



Promotion of collaboration

The HRO has concluded partnership agreements with universities, national research institutes and companies to lay the foundation for partnerships between organizations that are involved in a wide range of projects, thereby promoting joint research, mutual cooperation with extension activities, technical support and personnel exchanges.

General consultation counter

We respond to technical questions, research needs and requests for business cooperation at the general consultation counter located inside our headquarters.

HRO Headquarters
(Hokkaido General Research Plaza)

✉ hq-soudan@hro.or.jp

