

## 図版解説

## Explanation of plates

## Plate I

- A. Initial symptoms of black streak on edible burdock in natural infection.
- B. Black streak lesions on edible burdock in natural infection.
- C. Diseased petiole of edible burdock snapped off at the necrotic lesions in natural infection.
- D. Larger necrotic spot formed in the centers or on the margins of lamina of young leave.

## Plate II

- A. Colony of the edible burdock isolate cultured on Yeast malt agar (YMA) at 20 °C for 14 days.
- B. Hyphae with clamp connections at the septa. Bar is 10µm.
- C. Ballistospore developing from sporogenous cell. Bar is 30µm.
- D. Ballistospores of *I. perplexans* edible burdock isolate (IB9602) on YMA. Bar is 40µm.
- E. Chlamydospores of *I. perplexans* edible burdock isolate (Blme943) on YMA. Bar is 30µm.
- F. Appressoria formed from ballistospores on a 1/4APDA slide culture. Bar is 40µm.
- G. Yeast cells of *I. perplexans* edible burdock isolate (Blme943) on YMA. Bar is 40µm.

## Plate III

- A. Black streak lesions on leaf veins of edible burdock after spraying with a ballistospore suspension of *I. perplexans*.
- B. Black streak lesions on petiole of edible burdock after spraying with a ballistospore suspension of *I. perplexans*.
- C. Petal blight on flowers of chrysanthemum after spraying with a ballistospore suspension of the edible burdock strain.
- D. Streak rot on leaf veins of artichoke after spraying with a ballistospore suspension of the edible burdock strain.

## Plate IV

- A. Yeast cell occurred from mycelia of *I. perplexans* edible burdock isolate on a 1/4APDA.
- B. Two types of yeast cells. Yeast-hyphae type is at left. Yeast type is at right.

## Plate V

Leaf lesions on edible burdock seedlings caused by seed-borne *I. perplexans* infection.

## Plate VI

Inhibition of *I. perplexans* yeast isolate on yeast-peptone-malt agar placed on paper disk soaked in the fungicide solution. A: Tebuconazole WP, × 1000, B: Tebuconazole WP, × 10000, C: Fluazinum WP, × 1000, D: Fluazinum WP, × 10000, E: distilled water.

Plate I





## Plate II

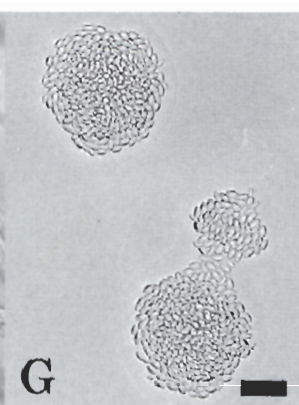
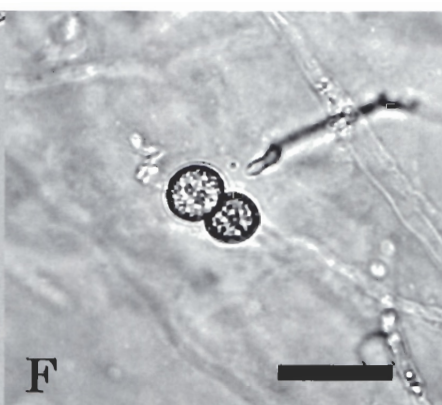
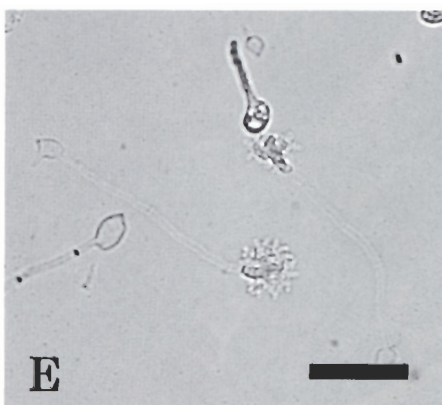
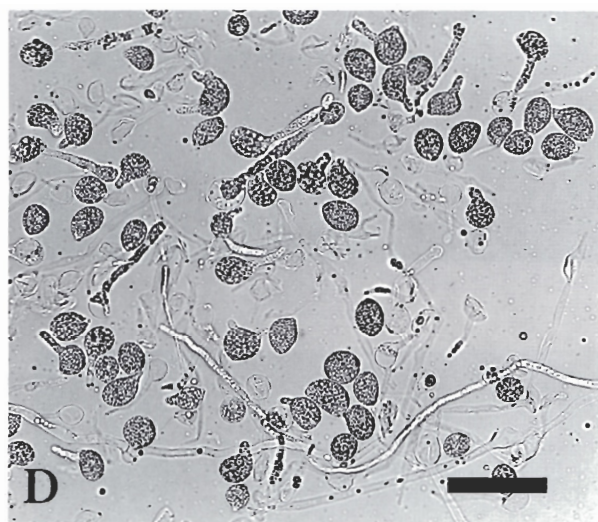
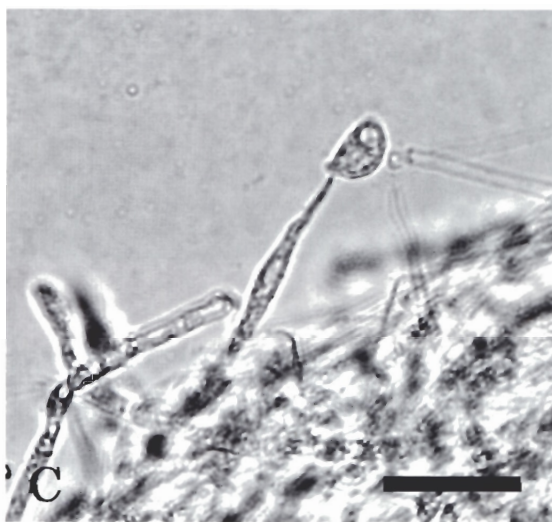
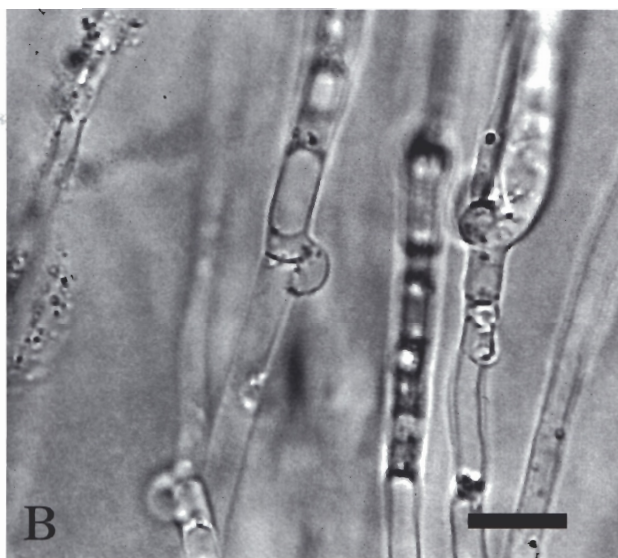
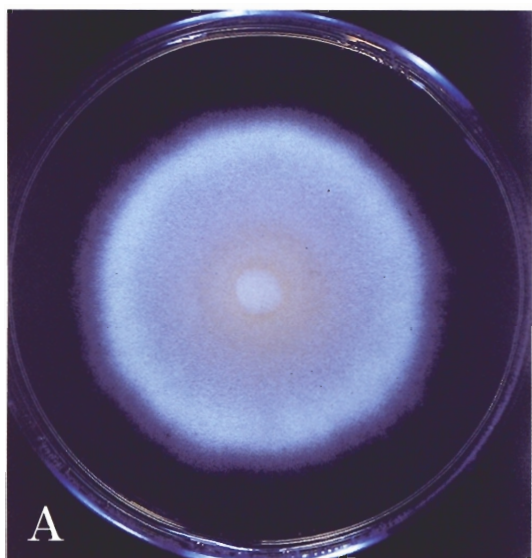


Plate III

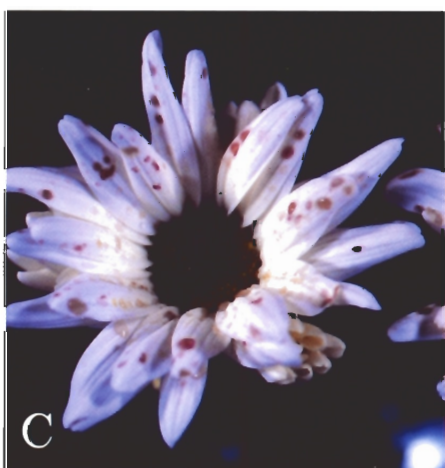




Plate IV

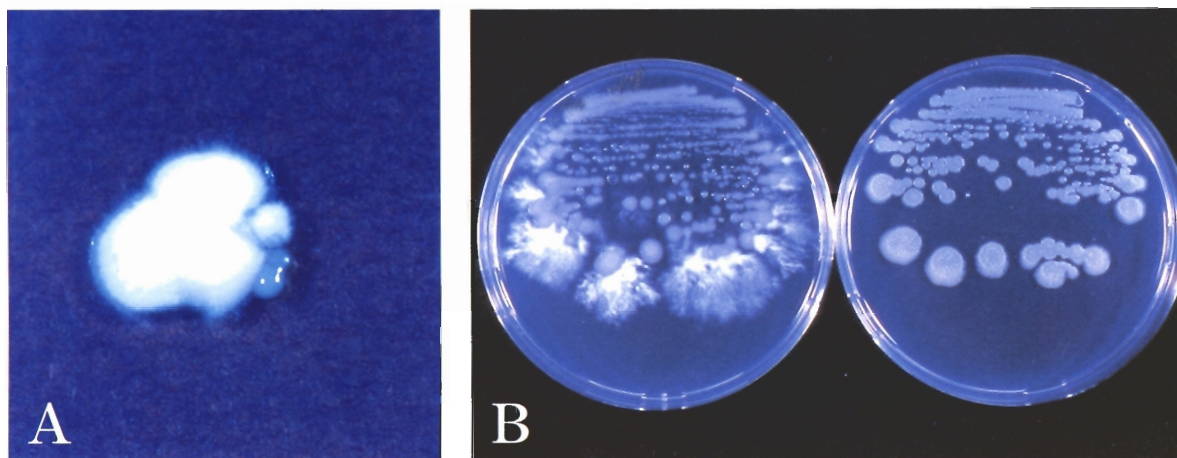


Plate V

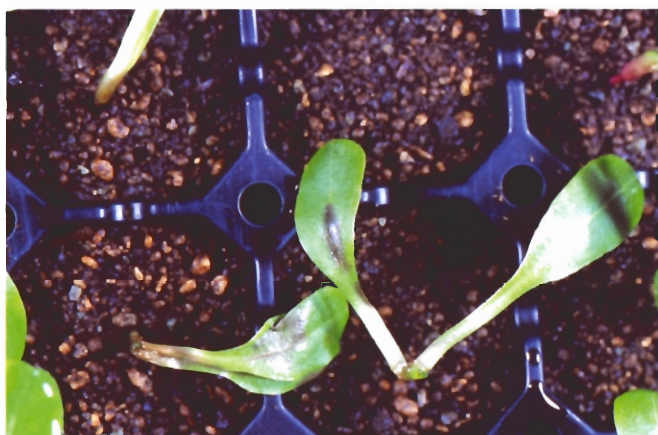


Plate VI

